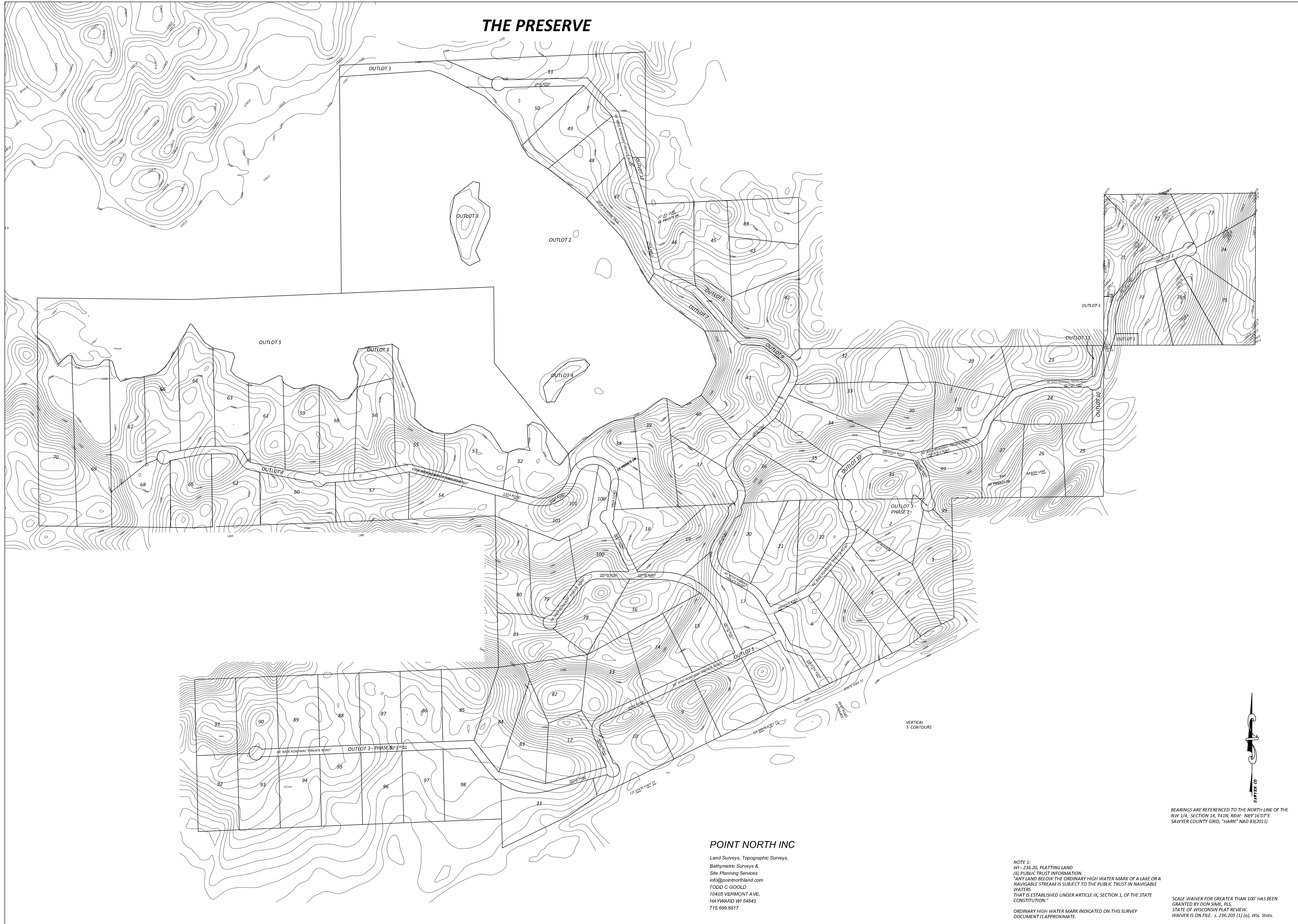


THE PRESERVE



POINT NORTH INC

Land Surveys, Topographic Surveys,
Bathymetric Surveys &
Site Planning Services
info@pointnorthland.com
TODD C GOOLD
10405 VERMONT AVE.
HAYWARD WI 54843
715.699.6817

NOTE 1:
W1 - 236.20, PLATTING LAND
(G) PUBLIC TRUST INFORMATION
"ANY LAND BELOW THE ORDINARY HIGH WATER MARK OF A LAKE OR A
NAVIGABLE STREAM IS SUBJECT TO THE PUBLIC TRUST IN NAVIGABLE
WATERS
THAT IS ESTABLISHED UNDER ARTICLE IX, SECTION 1, OF THE STATE
CONSTITUTION."
ORDINARY HIGH WATER MARK INDICATED ON THIS SURVEY
DOCUMENT IS APPROXIMATE.

BEARINGS ARE REFERENCED TO THE NORTH LINE OF THE
NW 1/4, SECTION 14, T41N, R8W, N89°16'07"E
SAWYER COUNTY GRID, "HARR" NAD 83(2011)

SCALE WAIVER FOR GREATER THAN 100' HAS BEEN
GRANTED BY DON SIMS, PLS.
STATE OF WISCONSIN PLAT REVIEW:
WALKER IS ON FILE. s 236.202 (1) (c), Wis. Stats.