

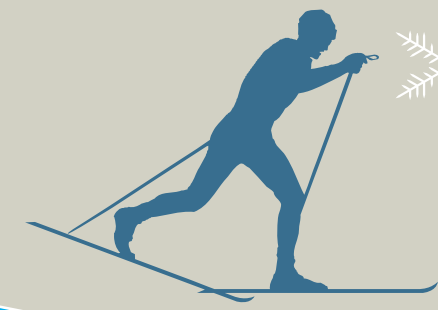


*A Recreational Paradise!*

Private Property



**Birkebeiner Ski Trail**



**CAMBA Mountain Bike Trails**



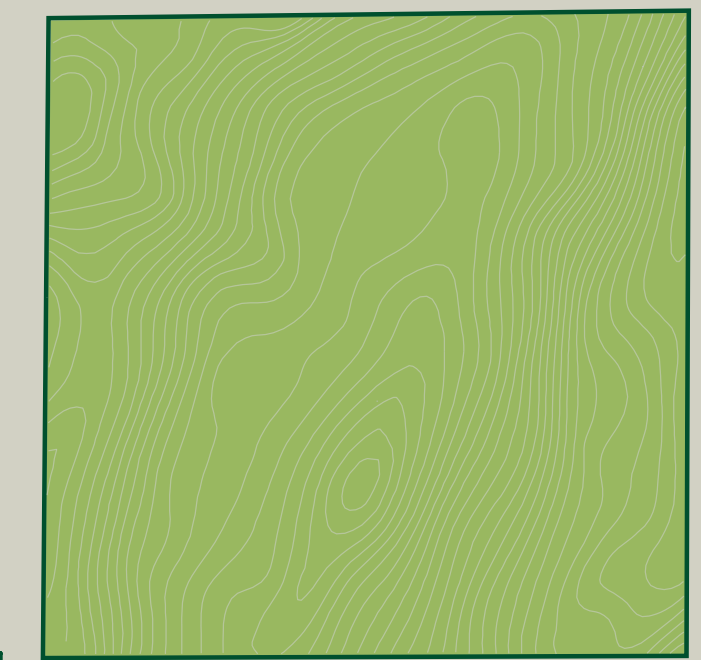
PIT ROAD

**Roads & Utilities Development Completion**

1 May 2025	
2 June 2025	
3 Aug 2025	
4 Oct 2025	
5 Dec 2025	

**LEGEND**

- Road -
- Ski Trail -
- Bike Trail -
- Wetland -



**Beautiful 5 acre wooded lots connected to the BIRKIE and CAMBA trails**

Shown are the approximate development timelines for when roads and infrastructure will be complete on each phase. Lots can be purchased now, as accepted offers on future development areas, and those lot sales will close when the final plats are approved from the county for those Phases. Purchase agreements state that Developer will then install Roads, Electric power, and Internet within 1 year of lot closing. Those should happen close to this development schedule.

5 acre Homesites \$64,900 and up,  
Homes from \$399,000 and up.

**For more details:**  
Contact Jeremy Hill at (715)558-2964  
or [jeremy@hillconstruction.net](mailto:jeremy@hillconstruction.net) or visit  
[www.ThePreserveHayward.com](http://www.ThePreserveHayward.com)

← Hayward - 7 Miles

**Close proximity to beautiful Round Lake!**

